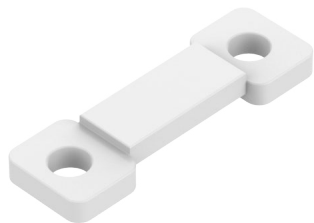
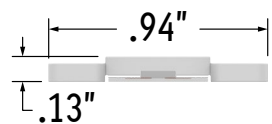


## Perspective View



## Assembled End Views



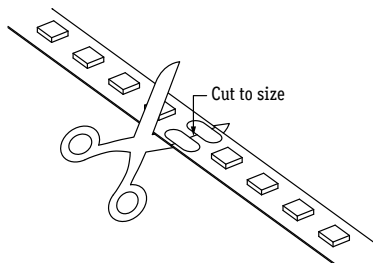
Dry Location Only (All Wattages)

1. Measure area where luminaire will be installed. Use a laser line to create a reference line along installation area, ensuring consistent alignment of mounting clips. Mark location where each mounting clip will be installed along reference line.

2. Unroll lightstrip from reel using a wire puller stand and cut to size as needed.

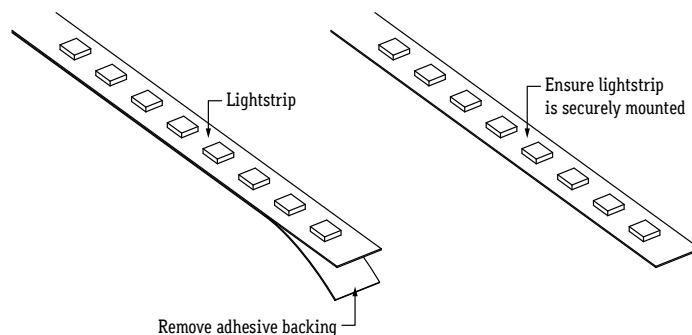
**Note:** Include both sets of solder pads if soldering connectors.

Refer to Soldering Guide on installation instructions for details.

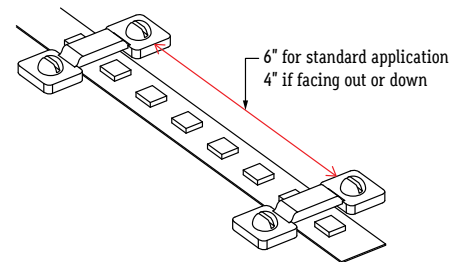


3. Remove adhesive backing from lightstrip and stick in place along chalk line, ensuring lightstrip is securely mounted and free of twists, tangles, creases, or bumps.

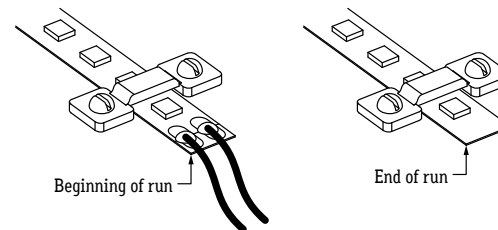
**Note:** Refer to Application Guidelines on installation instructions to ensure correct installation.



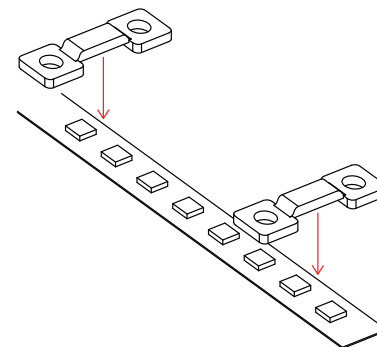
4. Use 1 mounting clip every 6" or 1 mounting clip every 4" if lightstrip is facing out or down.



5. Always use a mounting clip at the very beginning and very end of each run.



6. Lay mounting clips and pre-drill using proper drill bit for surface and screw size.  
**Recommendation:** 8/32 x 1" screw.



7. Screw MCS mounting clips to surface, securing lightstrip to surface.