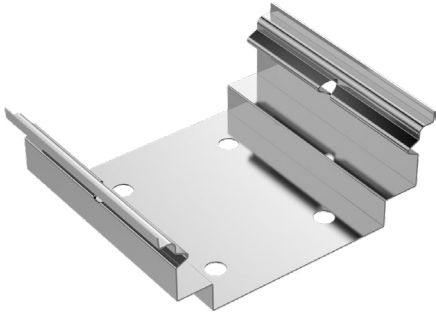
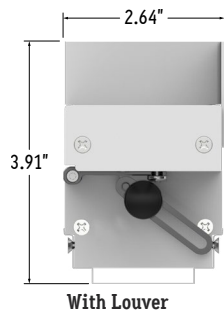
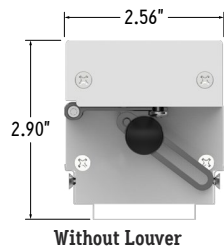


Perspective View



Assembled End Views



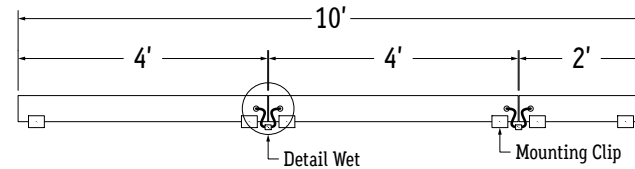
1. Measure area where luminaire will be installed. Use a laser line to ensure a straight installation.

2. Mark location where mounting clips will be installed along chalk line.

3. Use 2 mounting clips per fixture.

Example: 4' + 4' + 2' = 2 MC + 2 MC + 2MC = 6 MC total.

Push fixtures together at each connection until end caps touch.



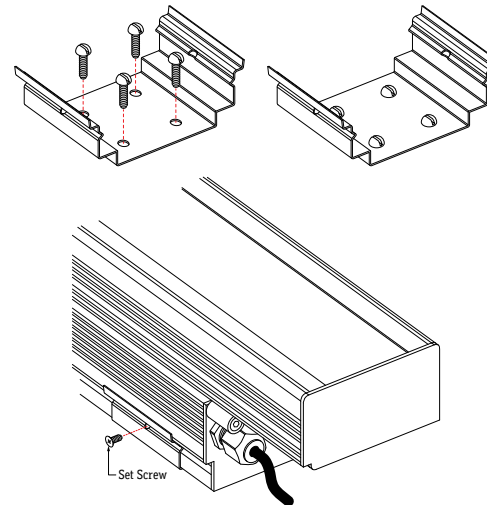
4. Lay mounting clips and pre-drill using proper drill bit for surface and screw size.

Recommendation: 8/32 x 1" screw.

Note: Allow 0.25" clearance for lateral expansion of assembled mounting clips.

Only install mounting clips on flat, even surfaces.

5. Screw mounting clips to surface, then snap fixture into mounting clips. Install set screws if needed. Set screws are required for downward and outward facing applications.



6. If applicable, connect disconnects between luminaires. Slide shrink tube over connectors and apply heat. The shrink tube will shrink down, sealing the connectors. Apply silicone around sealed connectors for a stronger seal.

